

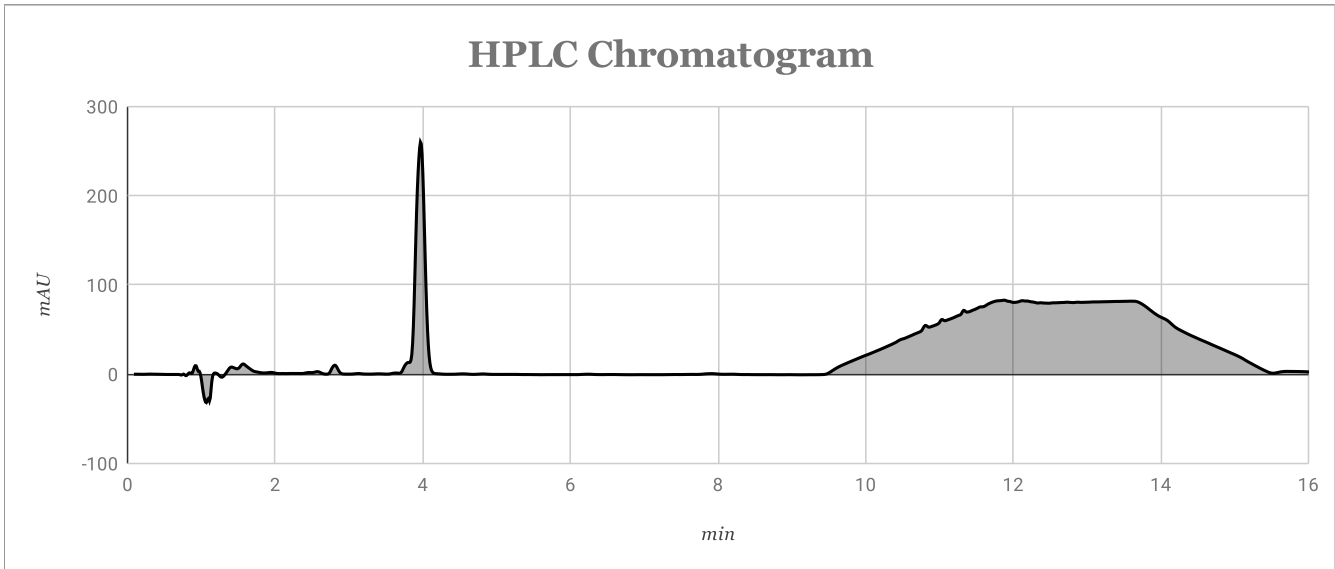


Certificate of Analysis



Sample Information

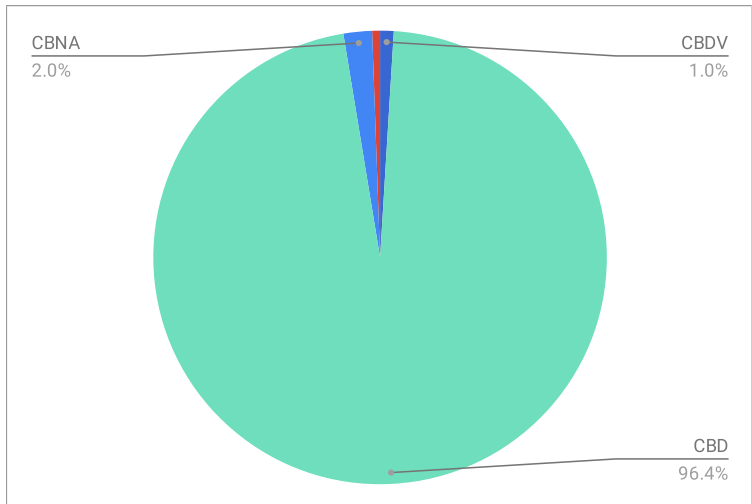
Sample Name:	19168-15.Joint_Capsules	CBD Concentration:	5.69%
Method Filename:	HPLCalibration0619.lcm	* Potential CBD Concentration:	5.69%
Batch Filename:	07102019\Samples4.lcb	* Potential CBD Concentration represents total CBD and CBDA (with adjustments for mass conversion)	
Vial #:	34	THC Concentration:	Non-Detect
Injection Vol (uL):	15		
Date Processed:	7/11/2019		
Time Processed:	9:07:36 AM		



Peak Table

Analyte	Retention Time	Conc. (%)
CBDV	2.57	0.057
CBD	3.97	5.69
CBG	--	ND
THCV	--	ND
CBDA	--	ND
CBGA	--	ND
CBN	--	ND
THC	--	ND
THCVA	--	ND
D8-THC	--	ND
CBL	--	ND
CBC	--	ND
CBNA	10.815	0.12
THCA	11.333	0.033

Relative Cannabinoid Concentrations



Centuria Foods, Inc.

Analysis Conducted By: Angelina Martinez